



## Edit a Tune File

EFILive Support - 2021-06-10 - Comments (0) - V8 Scan and Tune Software

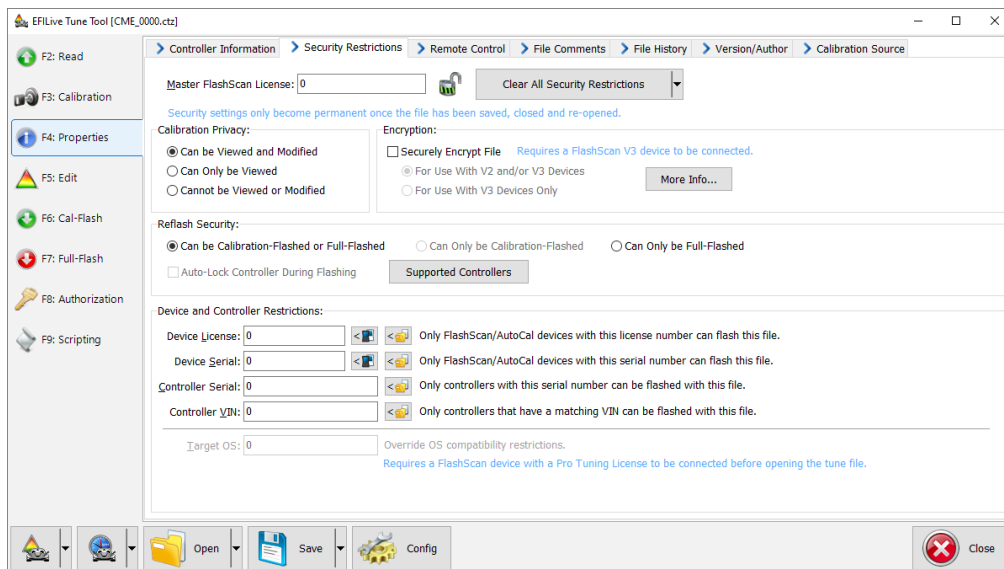
Follow these steps to modify your calibration.

1. Open the **EFILive V8 Scan and Tune** application.
2. Navigate to the **[F3: Tune] -> [F5: Edit]** menu in the left-hand pane.
3. Open your selected tune file.
4. On the **[F3: Calibration]** tab, confirm Checksums are valid. Where the checksums are invalid, users should not use the file and should source a calibration file where checksums are valid.
5. Navigate to the table(s) you wish to modify by using the Windows Explorer style navigation window.
6. Highlight a cell, multiple cells, columns, rows or the entire table and adjust the values using the calibrator editor icons.

The screenshot shows the EFILive Tune Tool interface. On the left is a navigation pane with 'F5: Edit' selected. The main window displays a 3D surface plot of the 'Timing Base, (A)' table. Below the plot is a data table with 'mm3' on the y-axis and 'RPM' on the x-axis. The table contains numerical values for timing base at various RPM intervals (300 to 4800) and fuel delivery levels (0 to 75 mm3).

	300	600	800	1000	1200	1400	1500	1600	1700	1800	1900	2000	2100	2400	2500	2750	2800	2900	3000	3200	3300	3400	4800
0	2.4	-0.7	-0.7	5.2	11.0	10.8	9.5	9.0	8.5	8.0	8.9	9.6	10.0	10.2	10.9	12.1	12.5	13.3	13.9	14.6	15.1	15.5	15.5
5	2.4	-0.7	-0.7	5.2	11.0	9.8	9.2	8.6	7.9	7.3	8.3	9.0	9.1	9.6	10.2	11.4	11.8	12.4	13.1	14.3	14.6	14.7	14.7
10	2.4	-0.6	-0.5	5.2	11.0	9.5	8.8	8.2	8.2	8.2	8.2	8.2	8.6	9.2	10.2	10.9	11.5	12.4	14.0	14.2	14.5	14.5	
15	2.4	-0.4	-0.4	5.3	11.0	9.3	8.5	8.0	8.0	8.0	8.0	8.0	8.3	9.2	9.9	10.6	11.0	11.6	13.6	13.9	14.2	14.2	
20	2.4	0.2	0.2	5.4	11.0	9.0	8.1	7.9	7.9	7.9	7.9	7.9	8.4	9.4	9.8	11.2	13.3	13.5	13.8	13.8	13.8		
30	0.8	0.4	0.4	4.6	9.0	6.6	5.8	5.8	5.8	5.8	5.8	5.8	5.8	6.0	7.2	8.5	10.8	11.0	11.2	11.2			
35	1.1	0.5	0.5	4.2	8.5	6.1	5.2	5.0	5.0	5.0	5.0	5.0	5.0	5.4	6.3	6.7	7.9	10.3	10.5	10.8	10.8		
40	1.5	1.4	1.4	4.3	7.9	5.6	4.4	4.5	4.5	4.5	4.5	4.5	4.5	5.1	5.8	6.1	7.3	9.9	10.1	10.3	10.3		
45	2.4	2.4	2.4	4.4	7.4	5.0	3.8	2.6	1.4	1.4	2.3	2.6	2.7	2.9	3.6	4.8	5.3	6.7	9.1	9.3	9.7	9.7	
50	2.4	2.4	2.4	4.5	6.8	4.1	2.8	1.5	0.1	0.7	1.6	1.9	2.3	2.8	3.3	4.3	5.0	5.4	6.0	8.1	8.3	8.6	8.6
55	2.4	2.4	2.4	4.4	6.3	3.4	1.0	0.4	0.0	0.2	0.7	1.0	1.2	2.0	2.6	3.6	4.3	5.0	5.4	6.7	7.0	7.3	7.7
60	2.4	2.4	2.4	4.1	5.8	3.2	0.6	0.4	0.1	-0.2	0.6	0.3	0.2	0.9	1.6	2.8	3.2	3.5	4.0	4.9	4.9	5.8	6.9
65	2.4	2.4	2.4	3.4	5.3	3.1	0.6	0.4	-0.3	-0.4	-0.1	-0.4	0.0	0.1	1.1	1.5	1.8	2.3	3.0	3.2	4.8	6.8	
70	2.4	2.4	2.4	3.6	4.7	3.8	0.6	0.4	-0.2	-0.4	-0.5	-0.6	-0.5	-0.6	-0.4	0.2	0.4	0.8	1.2	2.1	2.4	4.8	6.8
75	2.4	2.4	2.4	3.7	4.9	3.9	0.6	0.4	-0.2	-0.4	-0.5	-0.6	-0.7	-0.8	-0.7	-0.3	-0.1	0.1	0.5	1.4	1.9	4.8	6.8

7. A range of tune file security options can be applied using the options in the **[F3: Tune] -> [F4: Properties] -> Security Restrictions** tab.



8. Save changes to the tune file by using the Save tuning file, Save tuning file as, or Save tuning file for AutoCal options.

If using the Save option, ensure you have a copy of your stock tune saved elsewhere.

Save tuning file as, and Save tuning file for AutoCal options automatically appends a sequence number to the filename to make it unique giving users a history of sequentially numbered files with each saved change made. A FlashScan device must be connected to save security and/or AutoCal options.

#### Related Content

- [Controller Mapping not Available](#)
- [Problems Editing a Tune File](#)