



## License Backup File

EFILive Support - 2020-07-09 - Comments (0) - V8 Scan and Tune Software

License backup files are needed where:

1. EFILive support staff request the backup to assist with a support investigation.
2. A new device needs to have the same license number as an existing device.
3. V2 to V3 License Transfer product is purchased.
4. V3 to V3 License Transfer products is purchased.
5. A customer needs to replace their **FlashScan/AutoCal** device in the event it becomes lost, stolen or damaged.

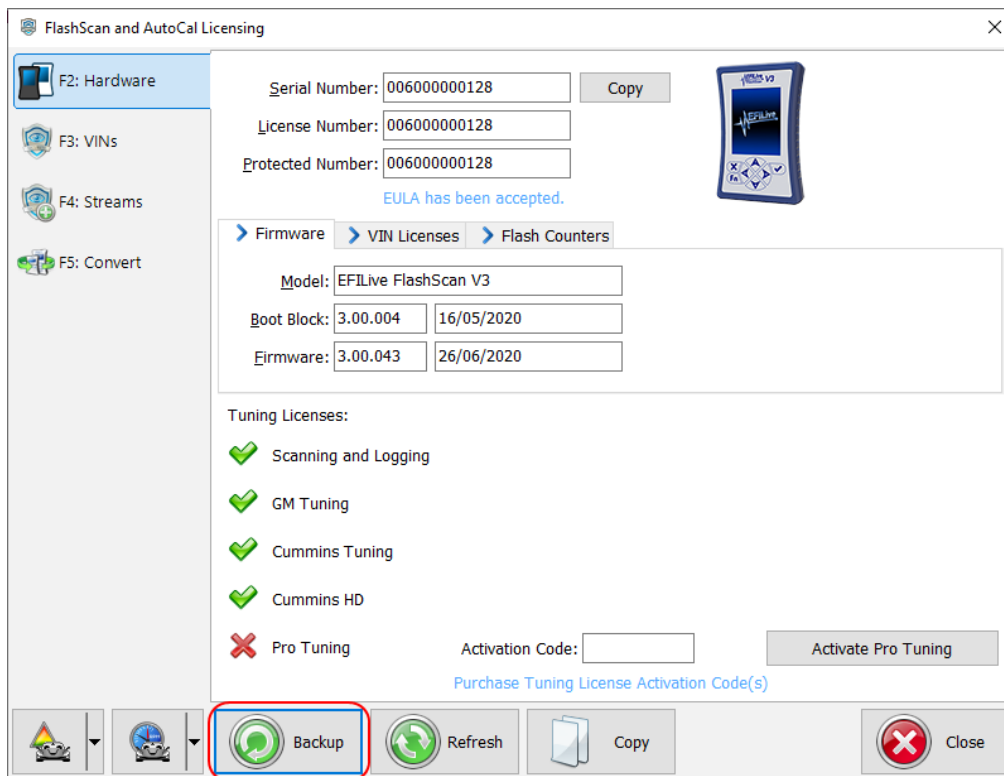
EFILive recommends customers make regular backups of their license backup file so that they have a copy available if their tuning equipment gets stolen, lost or damaged.

## Generation of License Backup Files

EFILive V8 Scan and Tune

Follow these steps to create and locate a backup of the licenses allocated to your FlashScan or AutoCal device.

1. Connect your **FlashScan** or **AutoCal** device to your PC.
2. Open the **EFILive V8 Scan And Tune** application.
3. Select the **F7: Licenses** option in the left-hand pane.
4. Click the **Backup** button.



5. A file will be created in the **My Documents\EFILive\V8\Backup** folder, named **XXXXXXXXXXXXX.ibu**.
6. The **XXXXXXXXXXXXX** portion of the backup file name will be replaced with the **Serial Number** of your FlashScan or AutoCal device.

Automatic Creation of License Backup file.

1. The license backup file is created/updated automatically during pass-through flashing.
2. A file will be created in the **My Documents\EFILive\V8\Backup** folder, named **XXXXXXXXXXXXX.ibu**.
3. The **XXXXXXXXXXXXX** portion of the backup file name will be replaced with the **Serial Number** of your FlashScan or AutoCal device.