



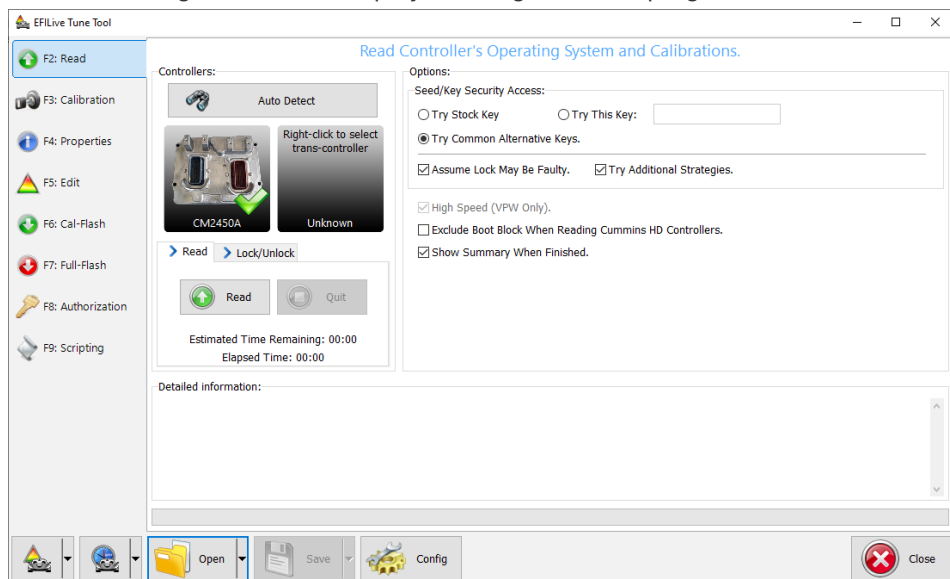
## Pass-Thru Read a Controller

EFILive Support - 2021-06-10 - Comments (0) - V8 Scan and Tune Software

NOTE: Not all Supported controllers can be read. Some vehicle manufacturers have disabled the ability to read the contents of a controller from the factory. In these cases, EFILive customers will need to obtain base files from an alternative source. Some EFILive Custom Operating Systems are written to non-readable memory. These files cannot be read from controller.

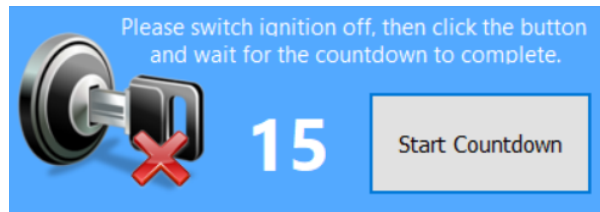
Follow these steps to read the selected controller.

1. Connect your **FlashScan/AutoCal** device to your PC and vehicle.
2. Turn the vehicle ignition to the **On** or **Accessory** position (vehicle must not be cranked/running when reading).
3. Open the **EFILive V8 Scan and Tune** application.
4. Click on the **[F3: Tune]** menu and select the **[F2: Read]** menu option.
5. In the **Controllers:** field either click **Auto Detect**, or right click on the controller box to use the drop down list to select the correct controller type. A picture of the currently selected controller is shown to assist with identification.
6. Click the **Read** button to initiate the read operation.
7. While the ECM is reading an Elapsed time indicator, an Estimated Time Remaining indicator, and a Progress bar will display tracking the Read progress.



8. When the read process is complete a countdown timer will be shown. When prompted perform the following actions:
  1. Turn the vehicle ignition Off.

2. Click on the Start Countdown button to begin the countdown timer.
3. DO NOT turn the vehicle ignition on until the countdown timer expires. This time is critical to allow the ECM to perform internal functions after a read operation.



9. On the **[F3: Calibration]** tab, confirm Checksums are valid. Where the checksums are invalid, users should not use the file and should source a calibration file where checksums are valid.
10. If checksums are valid, save tune file. If this is your vehicle's stock calibration, you should ensure you make a backup of this file in case you ever need to return the vehicle to stock.

#### Related Content

- [V3 Read a Controller](#)
- [FlashScan V2 Read a Controller](#)
- [AutoCal V2 Read a Controller](#)
- [Problem Reading a Controller](#)
- [GM Controller Authorization](#)