

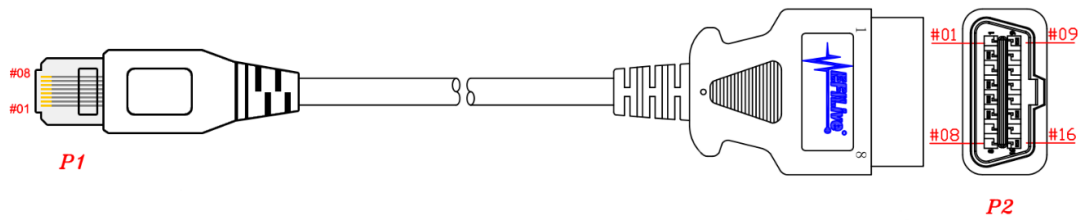


Pin Assignments

EFLive Support - 2021-07-14 - Comments (0) - FlashScan V2 Hardware Configuration

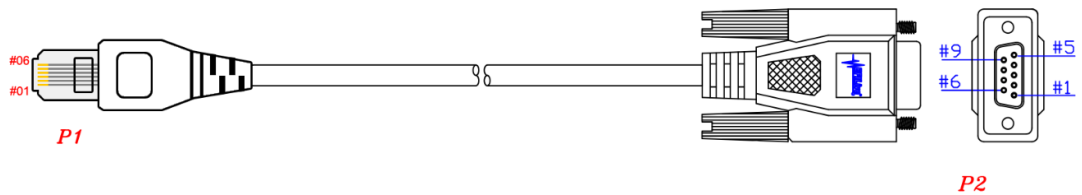
FlashScan V2/AutoCal V2 Pin Assignments

OBDII



P1	Function	P2
1	Un-switched Battery Power	16
2	CAN High	6
3	CAN Low	14
4	Chassis Ground	5
5	Not Used	
6	VPW	2
7	ALDL	9
8	Signal Ground	4

FlashScan V2 Serial



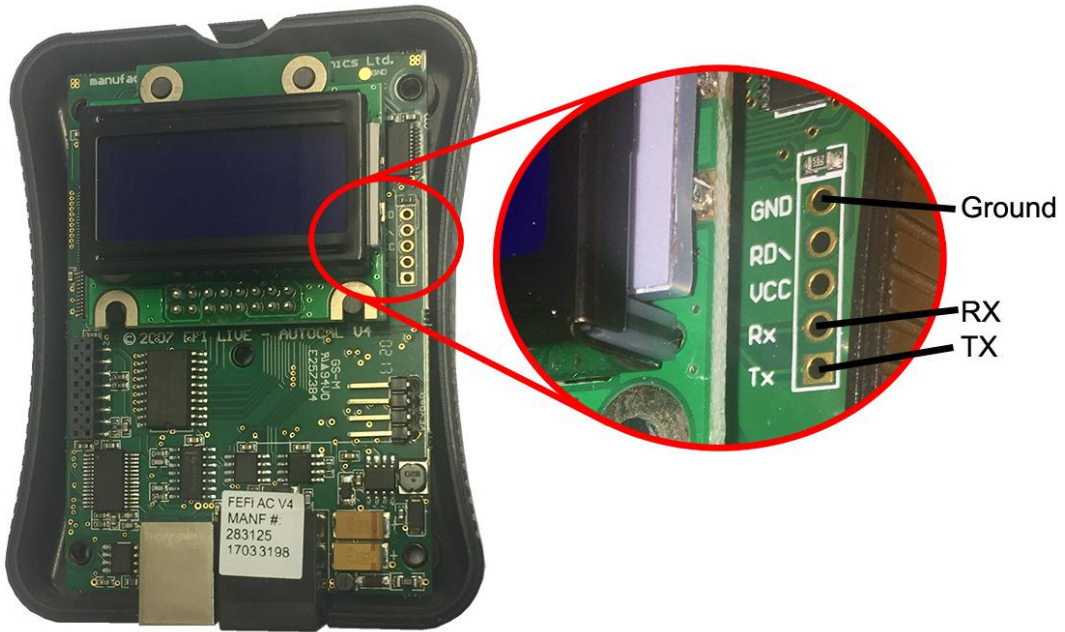
P1	Function	P2
----	----------	----

- 1 RX <-> TX 2
- 2 TX <-> RX 3
- 5 Ground 5

AutoCal V2 Serial



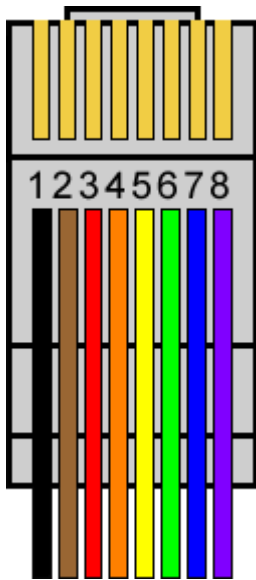
AutoCal V2 does not expose the serial connection externally. The internal serial interface is available via direct connection to the circuit board but opening AutoCal’s enclosure will void the warranty.



Bench Harness Pin Assignments

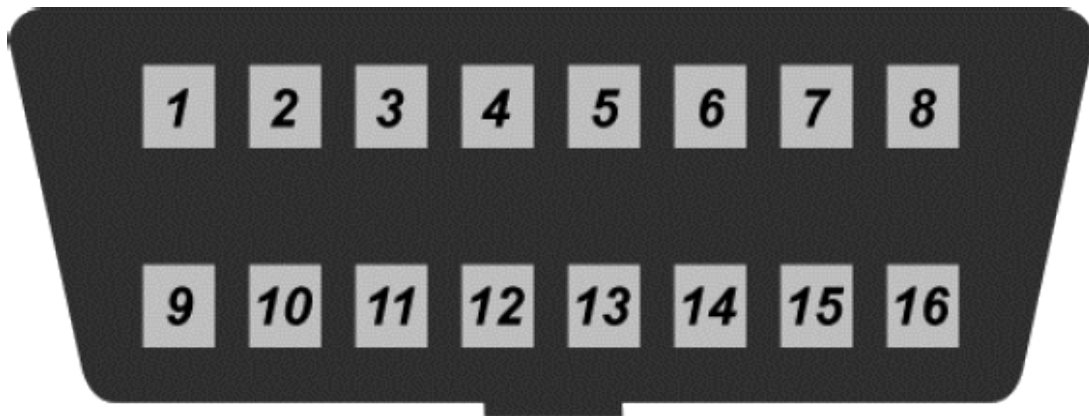
FlashScan V2 OBDII Cable Pin Assignments

RJ-45 Cable Plug



Vehicle OBDII Connector Pin Assignments

Vehicle SAE J1962 OBDII Socket



SAE J1962 Socket

- | | |
|---|------------------------------------|
| 1. GM CAN (Low-speed, Single-wire) | 1. GM ALDL (OBD-I 8192bps) |
| 1. SAE J1850-VPW Positive | 1. SAE J1850-VPW Negative |
| 1. Discretionary * | 1. Discretionary * |
| 1. Chassis Ground | 1. SCI RX (Engine) & Flash Strobe |
| 1. Signal Ground | 1. Discretionary * |
| 1. ISO 15765-4 CAN High | 1. ISO 15765-4 CAN Low |
| 1. ISO 9141-2 & ISO 14230-4 K-Line
SCI TX (Engine) | 1. ISO 9141-2 & ISO 14230-4 L-Line |
| 1. Discretionary * | 1. Un-switched Battery Power |

Related Content

- [AutoCal V2 Hardware Specification](#)
- [FlashScan V2 Hardware Specification](#)
- [Connecting FlashScan V2](#)
- [Connecting AutoCal V2](#)