



Knowledgebase > Getting Started > Screen Capture

Screen Capture

EFILive Support - 2020-07-28 - Comments (0) - Getting Started

To assist with technical support the following screen capture options are available:

EFILive V8 Scan and Tune

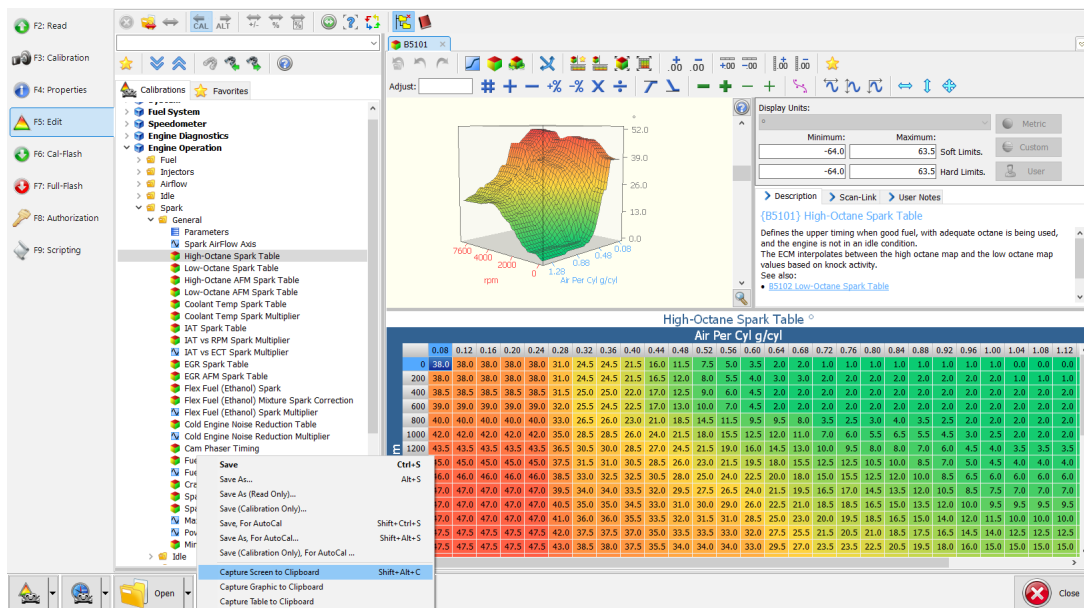
Scan Tool

Charts, Gauges and Maps displays in the Scan Tool can be copied directly to the clipboard using the **Capture Screen to Clipboard** option on the **[Save]** button.



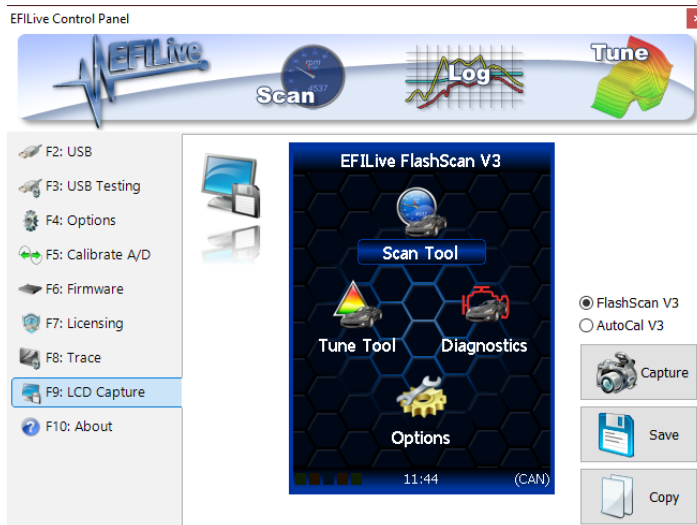
Tune Tool

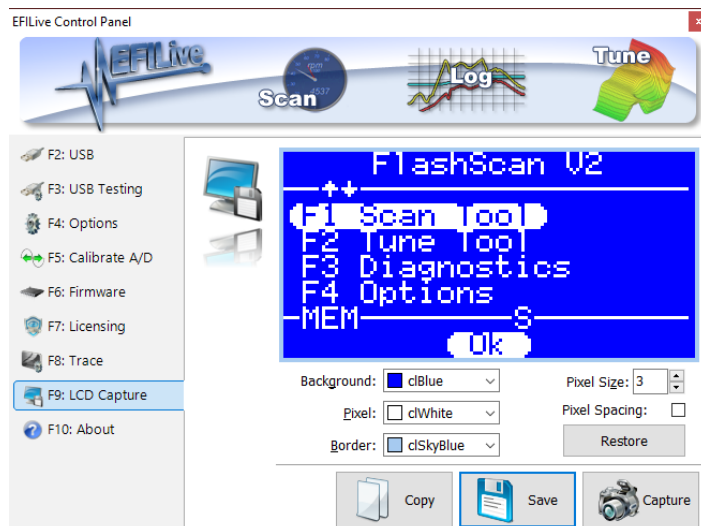
Screen, Graphic and Table displays in the [F5: Edit] menu of the Tune Tool can be copied directly to the clipboard using the appropriate options on the **[Save]** button.



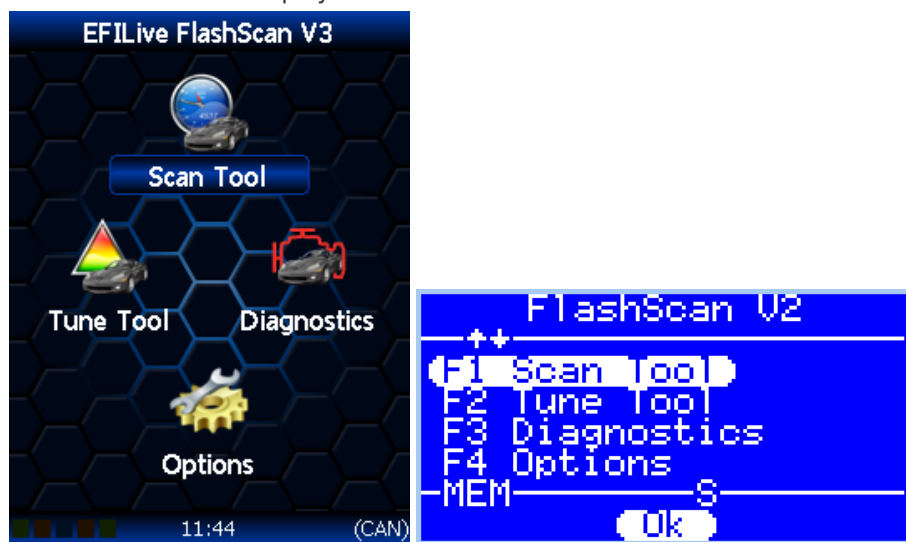
FlashScan/AutoCal V3, FlashScan V2 LCD screen capture

1. Open the **EFILive V8 Scan and Tune Software**.
2. Connect **FlashScan/AutoCal V3** or **FlashScan V2** to your PC.
3. Open the **Control Panel** software.
4. Navigate to the **[F9: LCD Capture]** menu.
5. Select **[Capture]** to take a screen capture and **[Save]** to save your screen capture.





6. Your saved files will display like this when viewed:



Related Content

- [Support Process](#)