



April 2023 Public Software Release

2023-04-15 - EFILive Support - Comments (0) - Download

The April 2023 Public Release software is available [here](#)

- V8 Software: V8.3.38
- V7.5 Software: V7.5.48
- FlashScan/AutoCal V3: Firmware: V3.00.106 (April 4, 2023)
Boot Block: V3.00.006 (Feb 27, 2022)
- FlashScan/AutoCal V2: Firmware: V2.08.194 (Nov 14, 2022)
Boot Block: V2.08.009 (Feb 27, 2021)

EFILive V8

V8.3.38

- Fixed fault when reading E35 (LBZ/LMM) controllers that would result in an "Index Out of Range" error.

V8.3.37

- Fixed menu item Options -> Self Tests -> File System Tests, it was accidentally located as a submenu of "User Interface Tests".
- Re-activated BCM reading/flashing for some early model-year GM BCMs. No editing/tuning support is available for the BCM.

V8.3.36

- Added "Show Code" option that will show the contents of remotely generated codes that are used by tuners to change AutoCal configurations, such as linking, unlinking and changing maximum VIN slots.
- Fixed command line "help" display, the -oL0 and -oL1 options were documented the wrong way around. -oL0 is Un-link and -oL1 is Link.
- Fixed cax8 description links so that they can include links back to existing EFILive defined calibrations.
- Fixed PIDs with channel counts greater than 4, not showing up in the "Channel Allocation per Module" display at the bottom of the "PID Selection" area in the Scan Tool.

- Added channel counts 5..7 to the PID search option.
- Fixed charts not displaying correctly when the [F4: Charts] tab page was un-docked from the main Scan Tool window, if OpenGL hardware acceleration was used to render the charts.
- Fixed potential access violation when closing the Scan Tool window if a tab page had been un-docked and re-docked.
- Updated the E86A and E86B import options to:
 - i. correctly remember and use the most recently used import folder and,
 - ii. more accurately detect other supporting files required for each import and,
 - iii. leave the [F8: Tools] window open after each successful import.
- Fixed error message when importing E86B *.epr files. The error message incorrectly stated that the *.epr file should be 128KB when it should only be 64KB.
- Fixed access violation when Windows destroys and recreates the tune window. The OpenGL context was not being re-initialized correctly when the window was re-created.
- Fixed cax8 file loading so that editable axis calibrations' descriptions are automatically generated with cross-references back to the data calibrations that use the axis.
- When displaying the Alt calibration during a compare operation, the newly added V7 style smoothing controls were not disabled correctly, allowing the user to accidentally modify the Alt calibration.

V8.3.35

- Changed cax8 functions: _W(n) and _L(n) so that the 'n' argument now specifies the byte offset from the calibration address instead of the word or long offset. Any cax8 file that uses the _W(n) or _L(n) functions must be updated by multiplying the n argument by 2 for the _W(n) function and by 4 for the _L(n) function.
- Fixed E99 and T87A TIS import options, they were failing with "argument out of range" errors.
- Fixed command line option -oVx which was not setting the maximum number of VINs correctly.
- Fixed command line options -oLx and -oSx, which were operating in reverse.

V8.3.34

- Fixed check-sum errors when importing E86A JTAG files.

V8.3.33

- Added TIS import option for E98 file sets. See [F8: Tools] -> [F3: Import] -> [TIS Import].
- Fixed [F8: Tools] -> [F7: Bin Mapping] display for E86B which was incorrectly showing

the address mapping for E86A.

- Added [Identify] option to the [F4: OBD]->[F3: OBD] display to quickly retrieve just the controller identification details without also retrieving test results and DTCs.
- Added torque check sum corrections for E41 files. Modified E41 files will now have their torque check sums updated when saved (prior to flashing) using the EFILive V8 software.

V8.3.32

- Allow user to configure 2D charts to use the standard arrow mouse pointer - for greater accuracy when moving chart points.
- Added V7 style smoothing option to the tune editor smoothing controls.
- Added Pro Tuning option to allow some read-only calibrations to be read-write.
- Fixed problem that caused some E98 controllers to show a corrupted serial number, which in turn caused VIN licensing attempts to be rejected.
- Fixed check-sum errors when importing E86B JTAG files.

V8.3.31

- Added Pro Tuning option to bypass flash restrictions on ECMs that cannot be identified, for the following ECM types: E01, E41, E88, E90, E93, E99 and T87A.
- Added ability to open stock CMF (CM2450B) 2022 tune files in the EFILive V8 software and flash the stock file into an ECM. The software will complain that "EFILive cannot determine some OS specific data.", and to "email the file to support@efilive.com for analysis". That is not necessary as the files cannot be edited and modified files cannot be flashed into the 2022 ECMs. Only untouched/stock files can be flashed into the CM2450B ECM.

FlashScan/AutoCal V3 Firmware

V3.00.106

- Added option to allow firmware to be rolled back to an earlier version. The minimum firmware version to which the device can be rolled back is: V3.00.105. As new firmware versions are released you will be able to roll back to a carefully selected and compatible range of previous versions. The option to allow the firmware to be rolled back is Options -> Self Tests -> File System Tests -> Reset -> Roll Back Firmware.

V3.00.105

- Increased timeout for receiving multi-segmented message protocol control information (PCI) frame. This change may help stabilize some controllers' read and/or flash processes.

V3.00.104

- Made changes to the USB driver/interface to help mitigate error \$0101 "No Data

Received" on some Windows operating systems that are using old and/or buggy USB drivers.

V3.00.103

- Change audible tick to sound more like a tick.

V3.00.102

- Added option to emit an audible tick each time a rogue module transmits data during OBDII bus silence. The option can help identify misbehaving modules, by disconnecting modules one-by-one until the audible ticks are silenced. See Tune Tool -> F1: Tuning -> F4: Test OBD Network -> F4: Monitor Rogue Modules.
- Pressing "Fn" three times in a row will save a screen shot of the LCD screen image in a *.bmp file in the \EFILive\Screens folder.

V3.00.101

- *.xalm trace files now capture additional information to help EFILive support interpret the trace data more effectively.

V3.00.100

- Added Pro Tuning option to bypass flash restrictions on ECMs that cannot be identified, for the following ECM types: E01, E41, E88, E90, E93, E99 and T87A.

FlashScan/AutoCal V2 Firmware

V2.08.194

- Added Pro Tuning option to bypass flash restrictions on ECMs that cannot be identified, for the following ECM types: E01, E41, E88, E90, E93, E99 and T87A.

Calibration Updates

V8.3.38

- Added editing support for CM2350A operating system: 23701862.
- Added editing support for E80 operating system: 12707638.

V8.3.36

- Added editing support for CM871 operating system: 08000065.

V8.3.35

- None

V8.3.34

- Added VATS patch to E92 operating system 12677878.
- Added editing support for CM2250 operating systems: 05300163.

V8.3.33

- Added editing support for CM2250 operating systems: 05300138 and 05300154.
- Added editing support for E92 operating system: 12720775.
- Fixed issue with calibration B0951 in E92 operating systems: 12677012, 12683365, 12685939, 12686391, 12688929, 12711166, 12688228, 12688025, 12711163, 12691156, 12711165, 12686744, 12691157 and 12711167.
- Added additional idle calibrations to selected E67 operating systems: 12603381, 12652955, 12653669, 12656245, 12656942 and 12658816.
- Added editing support for CM2450A operating system: 64702332.
- Added editing support for E78 operating system: 12692707.
- Added CMC VATS patch for operating systems: 11551035 and 11620807.

V8.3.32

- Added editing support E78 OS 12658818.
- Added missing tables to multiple E78 operating systems.

V8.3.31

- Added E80 VATS patch for operating systems: 12692780 and 12696874.
- Added editing support for CM2350B (CME) operating system: 32150405.
- Added Locking support for E39A operating system: 12644447 and 12654753.
- Added VATs patching for E39A operating system: 12670802.
- Added editing support for CM2350A operating systems: 23701853, 32012003, 32150405 and 60701765.
- Added editing support for CM2450A operating system: 64702113.
- Added editing support for many new CMF (CM2450B) operating systems.

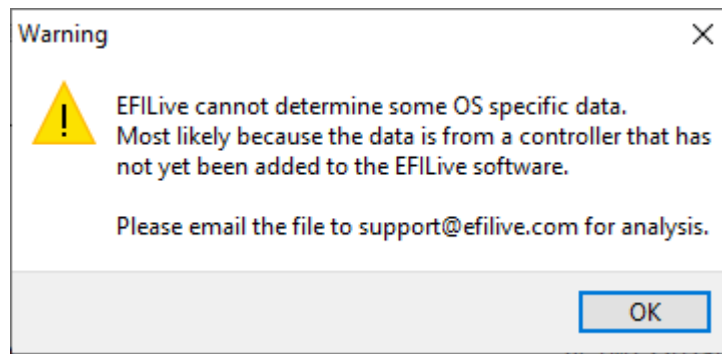
Documentation Updates

V8.3.31

- None.

Limitations

- **Limitation #1:** When logging DMA PIDs (i.e., PIDs whose names end with \"_M\" or \"_DMA\"), if the ignition is switched off for an extended period while data logging but data logging is not terminated, then when the ignition is switched on again the data log automatically continues. However, the DMA PIDs may no longer return valid data.
- **Workaround:** EFILive recommends stopping the data log and restarting the data log when switching off the ignition for extended periods
- **Limitation #2:** When opening CMF (CM2450B) Cummins 2022 tune files, the EFILive software will complain with the following message:



That is expected and the message may be ignored. We have only added the option to open CMF 2022 stock files so that EFILive can flash stock files. EFILive cannot be used to update the check sums of modified files. Modified files cannot be flashed. Ignore the message if you are opening and flashing a 100% stock tune file. Do not attempt to flash a modified file, it will fail at the end of the flash and the vehicle will be left in a no-start condition until a stock file is flashed in.

- **Workaround:** None.
- **Limitation#3:** When logging DMA PIDs (i.e., PIDs whose names end with "_M" or "_DMA"), that are specific to a custom operating system such as DSP2 or DSP5 PIDs when running a stock operating system, the values returned by those DMA PIDs will not contain valid information and should be ignored.

Known Issues

- None