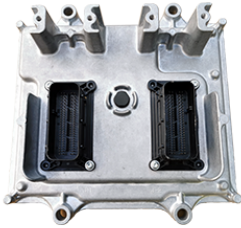




News > General > Cummins HD CM2670 & CM2450A Support

Cummins HD CM2670 & CM2450A Support

2020-10-09 - EFILive Support - Comments (0) - General



CM22670 and CM2450A Cummins HD support marks a new era for EFILive as the first two controllers to be exclusively supported in the V8 Editor.

Released for the 2020 year model, and used in X12 and X15 engine variants, customers can now scan, read, edit, and flash in a single piece of software - EFILive V8 Scan and Tune.

Controller support and supported vehicles lists have both been updated.